

WALL-MOUNTING BOXES



GW22471

WALL-MOUNTING BOXES FOR TOP SYSTEM PLATES

Code	Suitable for	Colour	For trunking dim. (mm)	For conduits max Ø (mm)	Pack Carton
GW 22 471	1/2/3 gang TOP SYSTEM	Cloud white	14x8.5 30x13 20x10	16 - 20	3/60
GW 22 472	4 gang TOP SYSTEM	Cloud white	14x8.5 30x13 20x10	16 - 20	3/30

CHARACTERISTICS: fitted for fixing the earth terminal GW26407.



GW24006

WALL-MOUNTING BOXES FOR COMPACT SELF-SUPPORTING PLATES

Code	Suitable for	Colour	For trunking dim. (mm)	For conduits max Ø (mm)	Pack Carton
GW 24 006	1/2/3 gang COMPACT	Cloud white	14x8.5 30x13 20x10	16 - 20 - 25	3/60
GW 24 007	3+3 gang COMPACT	Cloud white	14x8.5 30x13 20x10	16 - 20 - 25	3/30

CHARACTERISTICS: fitted for fixing the earth terminal GW26407.



NP40432

UNIVERSAL DEVICE BOXES FOR SUPPORTS/PLATES - STANDARD ITALIAN

Code	No. gangs	Configuration	Installable support./plates	Colour	Pack Carton
NP 40 432	3		Central axis 83.5 mm	White RAL 9010	10
NP 40 438	4		Central axis 108.5 mm	White RAL 9010	10
NP 40 444	12	6+6 overlapping	Central axis 163 mm	White RAL 9010	5
NP 40 434	3		Central axis 83.5 mm	Anthracite RAL 7021	10
NP 40 440	4		Central axis 108.5 mm	Anthracite RAL 7021	10
NP 40 446	12	6+6 overlapping	Central axis 163 mm	Anthracite RAL 7021	5

Suited for skirting and framing trunking.

CHARACTERISTICS: in combination with the relevant support allows the PLAYBUS/SYSTEM/CHORUS range of plates to be installed.

FREE-STANDING AND WALL-MOUNTING CONTAINERS



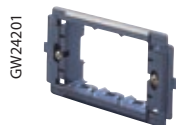
GW24018

FREE-STANDING AND WALL-MOUNTING CONTAINERS

Code	Description	Colour	Outer dim. LxHxD (mm)	Pack Carton
GW 24 018	4 gang	Cloud white	126x91x60	1/30
GW 24 019	4 gang	Toner black	126x91x60	1/30
GW 24 020	6 gang	Cloud white	181x91x60	1/20
GW 24 021	6 gang	Toner black	181x91x60	1/20

ACCESSORIES SUPPLIED: cable gland (for max Ø 10 mm cable), cable clamp.

SUPPORTS



GW24201

GREY INSULATING SUPPORTS TO INSTALL TOP SYSTEM / VIRNA / CLASSIC PLATES ON RECTANGULAR BOXES

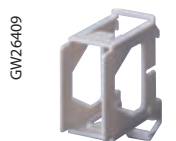
Code	Description	Pack Carton
GW 24 201	3 gang	10/300
GW 24 202	4 gang	10/150
GW 24 230	6 gang	10/100
GW 24 240	8 gang	10/60
GW 24 241	12 gang	10/40



GW24262

GREY INSULATING SUPPORTS TO INSTALL TOP SYSTEM / VIRNA PLATES ON SQUARE/RECTANGULAR BOXES

Code	Description	Pack Carton
GW 24 262	2 gang	10/120



GW26409

SUPPORTS FOR MOUNTING SYSTEM RANGE COMPONENTS ON DIN RAIL

Code	Description	No. DIN modules	Pack Carton
GW 26 409	1 gang	1.5	5/300
GW 26 410	2 gang	3	5/150

FLUSH-MOUNTING BOXES

RECTANGULAR BOXES FOR DOMOTICS, FOR BRICK WALLS - BIG BOX

GW24403



HIGH CAPACITY RECTANGULAR BOXES

Code	Description	Fixing supports axles distance	Compartment pre-arrangement	Outer dim. LxHxD (mm)	Characteristics	Pack Carton
GW 24 403	3 gang	83,5 mm	3	119x80x50	Halogen free	15/345
GW 24 404	4 gang	108,5 mm	4	144x85x50	Halogen free	5/135
GW 24 406	6 gang	100 mm	6	194x90x50	Halogen free	3/36
GW 24 206	6 gang (3+3)	83,5 mm	1	108x124x50	Halogen free	5/150
GW 24 237	8 gang (4+4)	108,5 mm	2	131x129x53	Halogen free	2/24
GW 24 238	12 gang (6+6)	163,5 mm	2	186x132x53	Halogen free	2/24
GW 24 239	18 gang (6+6+6)	163,5 mm	3	186x190x65	Halogen free	2/16

CHARACTERISTICS: GW24403, GW24404 and GW24406 can be combined with a reusable, mortar-proof, protective shield; functional dividers and joint elements. GW24206: suitable for assembly of GW24005 self-supporting "Compact" plates and GW24215 - GW24216 blank "Compact" plates.

ACCESSORIES SUPPLIED: GW24237, GW24238 and GW24239 functional dividers.

APPLICATIONS: ideal for use in the Home&Building Automation.

NOTES: GW24239 for PLAYBUS only.

GW24403P



MORTAR-PROOF PROTECTIVE SHIELDS FOR BIG BOX FLUSH-MOUNTING BOXES

Code	For boxes	Characteristics	Pack Carton
GW 24 403 P	BIG BOX - 3 gangs (GW24403)	Halogen free	200
GW 24 404 P	BIG BOX - 4 gangs (GW24404)	Halogen free	50
GW 24 406 P	BIG BOX - 6 gangs (GW24406)	Halogen free	50

CHARACTERISTICS: in technopolymer. Total protection during brick wall work, painting and finishing operations.

Equipped with soft technopolymer antennas for identification purposes, and a central handle making it easier to pull it out.

NOTES: clip fixing to speed up assembly and removal operations.

GW24321



FUNCTIONAL DIVIDER FOR HIGH-CAPACITY BIG BOX RECTANGULAR BOXES

Code	For flush mounting box	Characteristics	Pack Carton
GW 24 321	GW24403, GW24404, GW24406	Halogen free	200

APPLICATIONS: to separate circuits of different voltages in accordance with Systems Standard IEC 60364 (international) and HD 384 (european).

GW24330



CONNECTION ELEMENT FOR THE COMBINED ASSEMBLY OF BIG BOX RECTANGULAR BOXES

Code	For flush mounting box	Characteristics	Pack Carton
GW 24 330	GW24403, GW24404, GW24406	Halogen free	150

APPLICATIONS: for the horizontal/vertical composition of BIG BOXes with 3/4/6 gangs.

NOTES: GW24330 allows the assembly of System, Playbus and Chorus plates.

RECTANGULAR BOXES FOR LIGHTWEIGHT WALLS

GW24207



HIGH-CAPACITY RECTANGULAR BOXES WITH ADJUSTABLE DEPTH FIXING INSERTS- GLOW WIRE TEST 850°C

Code	Description	Fixing supports axles distance	Outer dim. LxHxD (mm)	Pack Carton
GW 24 207	3 gang	83,5 mm	107x64x48	5/200
GW 24 245	4 gang	108,5 mm	132x68x48	2/108
GW 24 246	6 gang	100 mm	183x72x52	2/80

NOTES: boxes suitable for installation in lightweight walls; H-type shell in accordance with EN 60670-1, and Ha-type in accordance with IEC 60670-1.

Remove the knockouts with the help of tools (e.g. screwdriver).

SQUARE BOX

GW24231



SQUARE FLUSH-MOUNTING BOX

Code	Description	Fixing supports axles distance	Outer dim. LxHxD (mm)	Characteristics	Pack Carton
GW 24 231	2 gang sectional	60 mm	70x70x50	Halogen free	5/200

CHARACTERISTICS: fitted for multiple horizontal/vertical configurations, with centre distance 71 mm between the boxes. Supplied with 2 fixing screws.