





Distribution boxes with industrial plugs and sockets and protection device section

Documents corresponding to the product:

Standard EN 60309-1;
EN 60309-2; EN 60 529

They are specially designed distribution boxes with mounted industrial plugs and sockets fabric cabled with possibility for protection devices mounting (breakers, residual current devices). They are designed for building sites mounting, industrial projects for power supply of mobile – movable consumers, exhibition centers, outdoor concerts or repair- reconstruct operations with temporary character. The boxes are made of special high quality plastic with impurity against aging at sun light exposing and for increasing the mechanical strength. They are designed in accordance with standard EN 60529 and provide reliable connection and high protection rate of the staff from electrical current. They provide IP protection not less than IP 44.

Technical data:

- * Rated voltage: 400V
- * Rated short circuit current: according to the mounted safety fuses and residual current devices
- * Impulse voltage wear resistance: 8kV
- * Power supply cable: 5x2.5mm²
- * Mechanical wear resistance: 3000 cycles
- * IP rate: IP 44
- * Plastic: UV rays wear resistance
- * Ambient temperature: -5 to +55°C
- * Altitude: up to 2000m
- * Overall dimensions of the box: 136x94x425 mm



Type	Inlet power supply conductor (mm ²)	Outlets	Packing / Box	Catalogue number
EDB 100 - 401	3x2.5	3 sockets 16A 1P+N+E	1 / 8	53401
EDB 100 - 402	5x2.5	1 sockets 16A 3P+N+E and 2 sockets 16A 1P+N+E	1 / 8	53402
EDB 200 - 401	3x2.5	3 sockets 32A 1P+N+E	1 / 8	53421
EDB 100 - 501*	3x2.5	3 sockets 16A 1P+N+E	1 / 8	53501*

Note: * The distribution box is supplied with extension cable with section 3x2.5mm² and length 1.5m

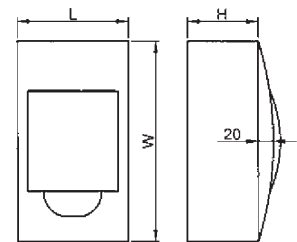


Plastic distribution boxes for surface mounting

The distribution boxes are designed for mounting in newly built buildings or buildings in re-construction. They are a module box with mounted protective devices of the given flats electrical current circuit circles. They are supplied with transparent door for each row opening upwards to 90°. They are made of white self-extinguishing plastic, resistant to heat and high temperature with IP rate IP 40. The mounted device in the box is protected from direct contact to the current leading parts. They are offered with DIN-rail for device mounting and terminal strips for the neutral and earthing conductor joining. Mounted directly on the walls with screws.

Documents corresponding to the product:
Standard EN 62 208;
EN 60439-1;EN 60 439-3

Technical data:
* Maximum insulation voltage: 690V; 50Hz
* fire resistance rate: UL 94
* IP rate: IP 40
* Class of current limiting: 2



Number of rows	Module capacity (number of devices)	Terminal strips number	Open-ings number	Dimensions (mm)			Packing / Box	Catalogue number
				L	W	H		
1	4	2	9	110	205	75	1 / 20	60040
1	6	2	9	150	205	75	1 / 20	60060
1	8	2	14	190	205	75	1 / 20	60080
1	12	3	17	260	205	75	1 / 10	60120
1	18	4	25	365	220	75	1 / 10	60180
2	24	6	34	270	330	75	1 / 10	60240
3	36	8	43	310	475	85	1 / 5	60360



Plastic distribution boxes for flush mounting

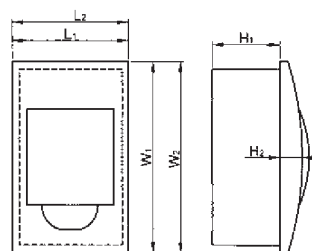
Documents corresponding to the product:

Standard EN 62 208;
EN 60439-1; EN 60 439-3

The distribution boxes are designed for mounting in newly built buildings or buildings in reconstruction. They are a module box with mounted protective devices of the given flats electrical current circuit circles. They are supplied with transparent door for each row opening upwards to 90°. They are made of white self-extinguishing plastic, resistant to heat and high temperature with IP 40. The mounted device in the box is protected from indirect contact to the current leading parts. They are offered with DIN-rail for device mounting and terminal blocks for the neutral and grounded conductor joining. Mounted through building-in in openings on the wall under plaster or in plasterboard (through special brackets).

Technical data:

- * Maximum insulation voltage: 690V; 50Hz
- * fire resistance rate: UL 94
- * IP rate: IP 40
- * Class of current limiting: 2



Number of rows	Module capacity (number of devices)	Terminal strips number	Openings number	Dimensions (mm)			Packing / Box	Catalogue number
				L	W	H		
1	4	2	9	110	205	75	1 / 20	60041
1	6	2	9	150	205	75	1 / 20	60061
1	8	2	14	190	205	75	1 / 20	60081
1	12	3	17	260	205	75	1 / 10	60121
1	18	4	25	365	220	75	1 / 10	60181
2	24	6	34	270	330	75	1 / 10	60241
3	36	8	43	310	475	85	1 / 5	60361



catalogue number 60085

Note: For plasterboard mounting should be used special brackets (4 pcs. set, catalogue number 60085, general packing - 10 sets).



Moisture-proof distribution boxes for surface mounting - IP 55

The distribution boxes are designed for mounting in newly built buildings or buildings in re-construction. They are a module box with mounted protective devices of the given flats electrical installation current circles. They are supplied with transparent door for each row opening upwards to 90°. They are made of white non-self-extinguishing plastic, resistant to heat and high temperature. The special design of the lids and gaskets provides IP rate IP 55. The mounted device in the box is protected from indirect contact to the current leading parts. They are offered with DIN-rail for device mounting and terminal strips for the neutral and earthing conductor joining. For direct wall mounting with screws.

Documents corresponding to the product:

Standard EN 62 209;
EN 60439-1;EN 60 439-3

Technical data:

- * Maximum insulation voltage: 690V; 50Hz
- * fire resistance rate: UL 94
- * IP rate: IP 55
- * Class of current limiting: 2

Type	Number of rows	Module capacity (number of devices)	Terminal strips number	Openings number	Dimensions (mm)			Packing / Box	Catalogue number
					L	W	H		
WP4	1	4	2	9	127	214	93	1 / 20	60100
WP6	1	6	2	9	162	214	93	1 / 20	60101
WP8	1	8	2	14	216	214	93	1 / 20	60102
WP12	1	12	3	17	270	214	93	1 / 12	60103
WP18	1	18	4	25	378	233	93	1 / 8	60104
WP24	2	24	6	34	340	288	93	1 / 8	60105