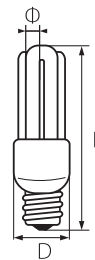


5U



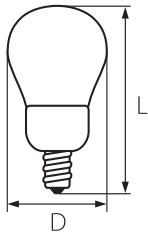
Model	Watt	Lumen (lm)	Colour temp.	Size (mm)			Catalogue number	Packing (pcs)
				D	L	φ		
5U/T5	95W	5100	6400K	88	305	17	99216271	20



6U



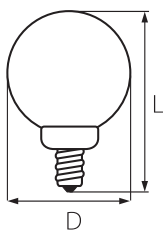
Model	Watt	Lumen (lm)	Colour temp.	Size (mm)			Catalogue number	Packing (pcs)
				D	L	φ		
6U/T5	125W	6510	6400K	105	315	17	99216272	20



PEAR



Model	Watt	Lumen (lm)	Colour temp.	Size (mm)		Catalogue number	Packing (pcs)
				D	L		
PEAR	9W	405	2700K	55	100	99290100	50
PEAR	9W	405	6400K	55	100	99290101	50
PEAR	11W	530	2700K	55	106	99290102	50
PEAR	11W	530	6400K	55	106	99290103	50
PEAR	15W	800	2700K	65	140	99290104	20
PEAR	15W	800	6400K	65	140	99290105	20
PEAR	20W	1150	2700K	65	150	99290106	20
PEAR	20W	1150	6400K	65	150	99290107	20



GLOBE



Model	Watt	Lumen (lm)	Colour temp.	Size (mm)			Catalogue number	Packing (pcs)
				D	L	φ		
GLOBE	15W	800	2700K	80	116	7	99280092	20
GLOBE	15W	800	6400K	80	116	7	99280093	20
GLOBE	20W	1150	2700K	100	150	12	99280094	20
GLOBE	20W	1150	6400K	100	150	12	99280095	20
GLOBE	25W	1350	2700K	110	158	12	99280096	20
GLOBE	25W	1350	6400K	110	158	12	99280097	20



SPIRAL D2



Model	Watt	Lumen (lm)	Colour temp.	Size (mm)			Catalogue number	Packing (pcs)
				D	L	φ		
SPIRAL D2	5W	175	2700K	32	78	7	99210046	100
SPIRAL D2	9W	405	2700K	32	96	7	99210048	100
SPIRAL D2	11W	530	2700K	32	100	7	99210050	100
SPIRAL D2	11W	530	6400K	32	100	7	99210051	100



SPIRAL D2



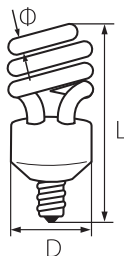
Model	Watt	Lumen (lm)	Colour temp.	Size (mm)			Catalogue number	Packing (pcs)
				D	L	φ		
SPIRAL D2	5W	175	2700K	32	78	7	99210047	100
SPIRAL D2	9W	405	2700K	32	98	7	99210049	100
SPIRAL D2	11W	530	2700K	32	105	7	99210052	100
SPIRAL D2	11W	530	6400K	32	105	7	99210053	100
SPIRAL D2	15W	800	2700K	42	106	7	99210054	100
SPIRAL D2	15W	800	6400K	42	106	7	99210055	100
SPIRAL D2	20W	1150	2700K	54	108	7	99210056	100
SPIRAL D2	20W	1150	6400K	54	108	7	99210057	100
SPIRAL D2	24W	1445	2700K	54	119	7	99210058	100
SPIRAL D2	24W	1445	6400K	54	119	7	99210059	100
SPIRAL D2	28W	1745	6400K	60	162	12	99210060	20
SPIRAL D2	32W	2055	6400K	60	170	12	99210061	20
SPIRAL D2	36W	2365	6400K	83	185	14	99210062	20



HALF SPIRAL



Model	Watt	Lumen (lm)	Colour temp.	Size (mm)				Catalogue number	Packing (pcs)
				D	C	L	φ		
HALF SPIRAL/T2	9W	405	4000K	40	46	96	8	99210145	100
HALF SPIRAL/T2	11W	530	4000K	40	46	100	8	99210147	100
HALF SPIRAL/T2	15W	800	4000K	40	46	110	8	99210149	100





HALF SPIRAL



Model	Watt	Lumen (lm)	Colour temp.	Size (mm)				Catalogue number	Packing (pcs)
				D	C	L	φ		
HALF SPIRAL/T2	9W	405	4000K	40	46	90	8	99210144	100
HALF SPIRAL/T2	11W	530	4000K	40	46	95	8	99210146	100
HALF SPIRAL/T2	15W	800	4000K	40	46	105	8	99210148	100
HALF SPIRAL/T3	20W	1150	4000K	48	60	125	9	99210150	50
HALF SPIRAL/T3	25W	1520	4000K	48	60	135	9	99210151	50
HALF SPIRAL/T5	45W	3080	6400K	72	78	230	14	99210267	20
HALF SPIRAL/T5	55W	3890	6400K	72	78	250	14	99210268	20



G9/SPIRAL



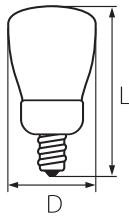
Model	Watt	Lumen (lm)	Colour temp.	Size (mm)				Catalogue number	Packing (pcs)
				D	C	L	φ		
G9/SPIRAL	5W	175	4000K	31	-	66	7	99211152	100
G9/SPIRAL	7W	285	4000K	31	-	76	7	99211153	100
G9/SPIRAL	9W	405	4000K	31	-	86	7	99211154	100
G9/SPIRAL	11W	530	4000K	31	-	96	7	99211155	100



GU10/SPIRAL



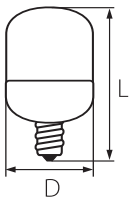
Model	Watt	Lumen (lm)	Colour temp.	Size (mm)				Catalogue number	Packing (pcs)
				D	C	L	φ		
GU10/SPIRAL	5W	175	4000K	31	-	68	7	99212156	100
GU10/SPIRAL	9W	405	4000K	31	-	88	7	99212157	100
GU10/SPIRAL	11W	530	4000K	31	-	98	7	99212158	100



R50



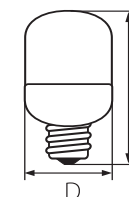
Model	Watt	Lumen (lm)	Colour temp.	Size (mm)				Catalogue number	Packing (pcs)
				D	C	L	φ		
R50	9W	405	2700K	50	-	88	7	99215351	50
R50	9W	405	4000K	50	-	88	7	99215164	50



T45



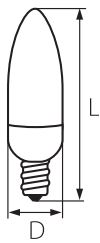
Model	Watt	Lumen (lm)	Colour temp.	Size (mm)			Catalogue number	Packing (pcs)
				L	D	φ		
T45	8W	380	2700K	45	92	7	9918307	100
T45	8W	380	4000K	45	92	7	9918352	100



T45



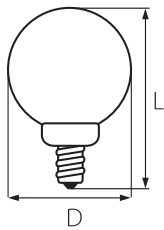
Model	Watt	Lumen (lm)	Colour temp.	Size (mm)			Catalogue number	Packing (pcs)
				L	D	φ		
T45	8W	380	2700K	45	92	7	9918308	100
T45	8W	380	4000K	45	92	7	9918353	100



CANDLE



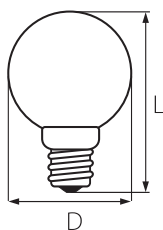
Model	Watt	Lumen (lm)	Colour temp.	Size (mm)				Catalogue number	Packing (pcs)
				D	C	L	φ		
CANDLE	7W	285	2700K	38	-	100	9	99213354	50
CANDLE	7W	285	4000K	38	-	100	9	99213159	50
CANDLE	11W	530	2700K	38	-	119	9	99213355	50
CANDLE	11W	530	4000K	38	-	119	9	99213160	50



G45



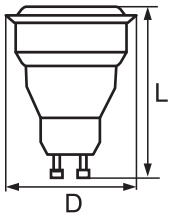
Model	Watt	Lumen (lm)	Colour temp.	Size (mm)			Catalogue number	Packing (pcs)
				L	D	φ		
G45	7W	285	2700K	45	85	7	9918305	100
G45	7W	285	4000K	45	85	7	9918356	100



G45



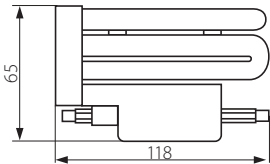
Model	Watt	Lumen (lm)	Colour temp.	Size (mm)			Catalogue number	Packing (pcs)
				L	D	φ		
G45	7W	285	2700K	45	85	7	9918306	100
G45	7W	285	4000K	45	85	7	9918357	100



GU10



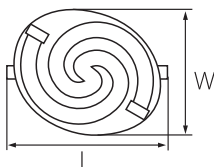
Model	Watt	Lumen (lm)	Colour temp.	Size (mm)				Catalogue number	Packing (pcs)
				D	C	L	φ		
GU10	7W	285	2700K	50	-	58	6	99214358	100
GU10	7W	285	4000K	50	-	58	6	99214161	100
GU10	9W	405	2700K	50	-	78	6	99214359	100
GU10	9W	405	4000K	50	-	78	6	99214162	100
GU10	11W	530	2700K	50	-	78	6	99214360	100
GU10	11W	530	4000K	50	-	78	6	99214163	100



ESLJ



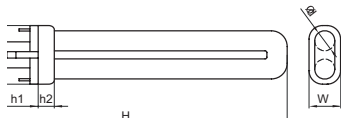
Model	Watt	Lumen (lm)	Colour temp.	Size (mm)			Catalogue number	Packing (pcs)
				L	W	H		
ESLJ118	24W	1250	6400K	118	45	65	99217303	100



ESLJ



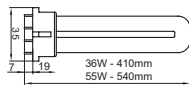
Model	Watt	Lumen (lm)	Colour temp.	Size (mm)			Catalogue number	Packing (pcs)
				L	W	H		
ESLJ78	9W	370	6400K	78	60	33	99217304	100



PLS



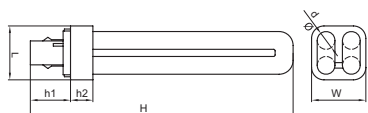
Model	Watt	Lumen (lm)	Colour temp.	Size (mm)						Catalogue number	Packing (pcs)
				L	h1	h2	H	d	W		
PLS	7W	350	2700K	31	27	10	135	2	16	99240361	50
PLS	7W	350	4000K	31	27	10	135	2	16	99240362	50
PLS	7W	350	6400K	31	27	10	135	2	16	99240080	50
PLS	9W	540	2700K	31	27	10	165	12	16	99240363	50
PLS	9W	540	4000K	31	27	10	165	12	16	99240364	50
PLS	9W	540	6400K	31	27	10	165	2	16	99240081	50
PLS	11W	820	2700K	31	27	10	235	12	16	99240365	50
PLS	11W	820	4000K	31	27	10	235	12	16	99240366	50
PLS	11W	820	6400K	31	27	10	235	2	16	99240082	50



PLL



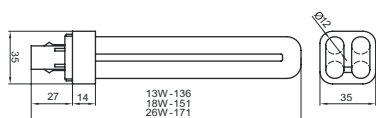
Model	Watt	Lumen (lm)	Colour temp.	Size (mm)						Catalogue number	Packing (pcs)
				L	h1	h2	H	d	W		
PLL	36W	2500	4000K	35	7	19	410	-	-	99260381	50
PLL	36W	2500	6400K	35	7	19	410	-	-	99260087	50
PLL	55W	3950	4000K	35	7	19	540	-	-	99260382	50
PLL	55W	3950	6400K	35	7	19	540	-	-	99260088	50



PLC2P



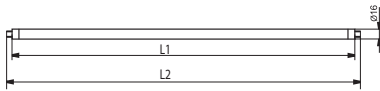
Model	Watt	Lumen (lm)	Colour temp.	Size (mm)						Catalogue number	Packing (pcs)
				L	h1	h2	H	d	W		
PLC2P	10W	560	2700K	35	27	14	110	12	35	99250367	100
PLC2P	10W	560	4000K	35	27	14	110	12	35	99250368	100
PLC2P	10W	560	6400K	35	27	14	110	12	35	99250083	100
PLC2P	13W	840	2700K	35	27	14	136	12	35	99250369	100
PLC2P	13W	840	4000K	35	27	14	136	12	35	99250370	100
PLC2P	13W	840	6400K	35	27	14	136	12	35	99250084	100
PLC2P	18W	1120	2700K	35	27	14	151	12	35	99250371	100
PLC2P	18W	1120	4000K	35	27	14	151	12	35	99250372	100
PLC2P	18W	1120	6400K	35	27	14	151	12	35	99250085	100
PLC2P	26W	1650	2700K	35	27	14	171	12	35	99250373	100
PLC2P	26W	1650	4000K	35	27	14	171	12	35	99250374	100
PLC2P	26W	1650	6400K	35	27	14	171	12	35	99250086	100



PLC4P



Model	Watt	Lumen (lm)	Colour temp.	Size (mm)						Catalogue number	Packing (pcs)
				L	h1	h2	H	d	W		
PLC4P	13W	840	2700K	35	27	14	136	12	35	99270375	100
PLC4P	13W	840	4000K	35	27	14	136	12	35	99270376	100
PLC4P	13W	840	6400K	35	27	14	136	12	35	99270089	100
PLC4P	18W	1120	2700K	35	27	14	151	12	35	99270377	100
PLC4P	18W	1120	4000K	35	27	14	151	12	35	99270378	100
PLC4P	18W	1120	6400K	35	27	14	151	12	35	99270090	100
PLC4P	26W	1650	2700K	35	27	14	171	12	35	99270379	100
PLC4P	26W	1650	4000K	35	27	14	171	12	35	99270380	100
PLC4P	26W	1650	6400K	35	27	14	171	12	35	99270091	100



EST-T5 **TRIPHOSPHOR**



Model	Watt	Lumen (lm)	Colour temp.	Size (mm)		Catalogue number	Packing (pcs)
				L1	L2		
EST-T5	4W	130	2700K	144	150	99220383	500
EST-T5	4W	130	4000K	144	150	99220384	500
EST-T5	4W	130	6400K	144	150	99220063	500
EST-T5	6W	250	2700K	210	220	99220385	500
EST-T5	6W	250	4000K	210	220	99220386	500
EST-T5	6W	250	6400K	210	220	99220064	500
EST-T5	8W	450	2700K	287	303	99220387	500
EST-T5	8W	450	4000K	287	303	99220388	500
EST-T5	8W	450	6400K	287	303	99220065	500
EST-T5	13W	800	2700K	515	531	99220389	200
EST-T5	13W	800	4000K	515	531	99220390	200
EST-T5	13W	800	6400K	515	531	99220066	200
EST-T5	14W	980	2700K	547	563	99220391	100
EST-T5	14W	980	4000K	547	563	99220392	100
EST-T5	14W	980	6400K	547	563	99220067	100
EST-T5	21W	1400	2700K	847	863	99220393	100
EST-T5	21W	1400	4000K	847	863	99220394	100
EST-T5	21W	1400	6400K	847	863	99220068	100
EST-T5	28W	1800	2700K	1148	1200	99220395	100
EST-T5	28W	1800	4000K	1148	1200	99220396	100
EST-T5	28W	1800	6400K	1148	1600	99220069	100
EST-T5	35W	2275	2700K	1445	1500	99220397	100
EST-T5	35W	2275	4000K	1445	1500	99220398	100
EST-T5	35W	2275	6400K	1445	1500	99220399	100
EST-T5	49W	3185	2700K	1445	1500	99220400	100
EST-T5	49W	3185	4000K	1445	1500	99220401	100
EST-T5	49W	3185	6400K	1445	1500	99220402	100



EST-T8



Model	Watt	Lumen (lm)	Colour temp.	Size (mm)		Catalogue number	Packing (pcs)
				L1	L2		
EST-T8	10W	280	4000K	328	344	99230403	200
EST-T8	10W	280	6400K	328	344	99230070	200
EST-T8	15W	560	4000K	435	450	99230404	100
EST-T8	15W	560	6400K	435	450	99230071	100
EST-T8	18W	960	4000K	590	605	99230405	25
EST-T8	18W	960	6400K	590	605	99230072	25
EST-T8	36W	2400	4000K	1200	1215	99230406	25
EST-T8	36W	2400	6400K	1200	1215	99230073	25
EST-T8	58W	4080	4000K	1500	1515	99230407	25
EST-T8	58W	4080	6400K	1500	1515	99230074	25

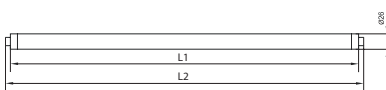


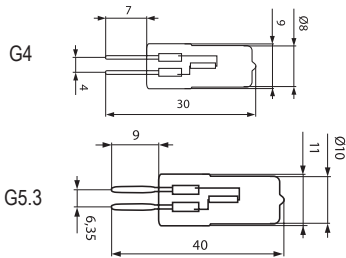
EST3F-T8

TRIPHOSPHOR



Model	Watt	Lumen (lm)	Colour temp.	Size (mm)		Catalogue number	Packing (pcs)
				L1	L2		
EST3F-T8	10W	630	2700K	328	344	992304083F	200
EST3F-T8	10W	630	4000K	328	344	992304093F	200
EST3F-T8	10W	630	6400K	328	344	992300703F	200
EST3F-T8	15W	945	2700K	435	450	992304103F	25
EST3F-T8	15W	945	4000K	435	450	992304113F	25
EST3F-T8	15W	945	6400K	435	450	992300713F	100
EST3F-T8	18W	1350	2700K	590	605	992304123F	25
EST3F-T8	18W	1350	4000K	590	605	992304133F	25
EST3F-T8	18W	1350	6400K	590	605	992300723F	25
EST3F-T8	36W	3348	2700K	1200	1215	992304143F	25
EST3F-T8	36W	3348	4000K	1200	1215	992304153F	25
EST3F-T8	36W	3348	6400K	1200	1215	992300733F	25
EST3F-T8	58W	5220	2700K	1500	1515	992304163F	25
EST3F-T8	58W	5220	4000K	1500	1515	992304173F	25
EST3F-T8	58W	5220	6400K	1500	1515	992300743F	25

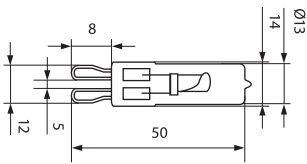




JC



Model	Tube holder	Watt	Lumen (lm)	Catalogue number	Packing (pcs)
JC	G4	5W	40	99340019	100
JC	G4	10W	100	99340020	100
JC	G4	20W	250	99340021	100
JC	G5.3	35W	465	99340022	100
JC	G5.3	50W	700	99340023	100



G9



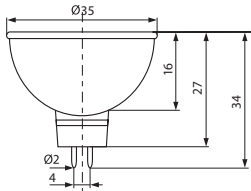
Model	Watt	Lumen (lm)	Catalogue number	Packing (pcs)
G9	20W	230	99340024	100
G9	25W	260	99340025	100
G9	35W	460	99340026	100
G9	40W	490	99340027	100



G9+XENON



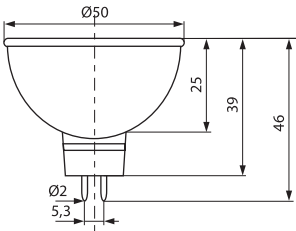
Model	Watt	Lumen (lm)	Catalogue number	Packing (pcs)
G9XE	20W	260	99340028	100
G9XE	33W	490	99340029	100



MR11



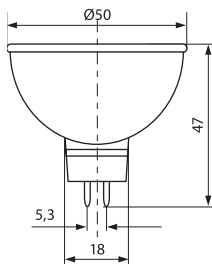
Model	Watt	Lumen (lm)	Φ (mm)	Catalogue number	Packing (pcs)
MR11	20W	690	35	99320011	500
MR11	35W	1300	35	99320012	500



MR16



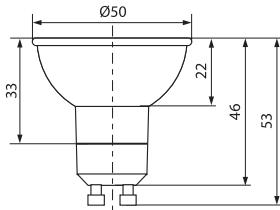
Model	Watt	Lumen (lm)	Φ (mm)	Catalogue number	Packing (pcs)
MR16	20W	400	50	99310008	200
MR16	35W	800	50	99310009	200
MR16	50W	1200	50	99310010	200



JCDR



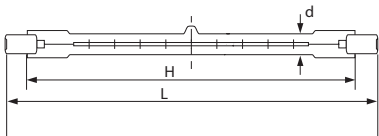
Model	Watt	Lumen (lm)	Φ (mm)	Catalogue number	Packing (pcs)
JCDR	20W	400	50	99330013	200
JCDR	35W	800	50	99330014	200
JCDR	50W	1200	50	99330015	200



GU10



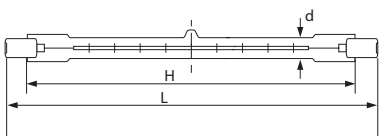
Model	Watt	Lumen (lm)	Φ (mm)	Catalogue number	Packing (pcs)
GU10	20W	400	50	99330016	200
GU10	35W	800	50	99330017	200
GU10	50W	1200	50	99330018	200



J TYPE



Model	Watt	Lumen (lm)	Size (mm)			Catalogue number	Packing (pcs)
			L	H	d		
J100	100W	1550	78	67	8	99300001	100
J150	150W	1920	78	67	8	99300002	100
J150	150W	2250	118	107	9	99300003	100
J200	200W	3520	118	107	9	99300004	100
J300	300W	5600	118	107	9	99300005	100
J500	500W	9900	118	107	9	99300006	100
J1000	1000W	24200	189	175	9	99300007	100



J TYPE + XENON



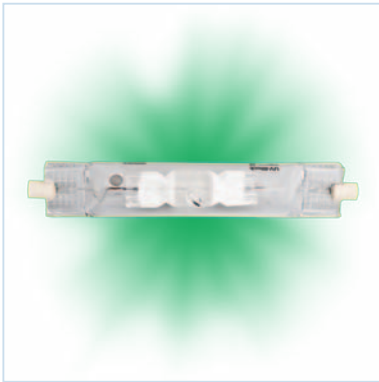
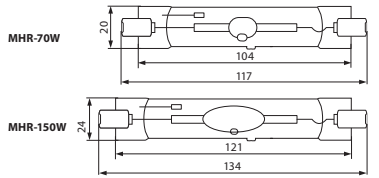
Model	Watt	Lumen (lm)	Size (mm)			Catalogue number	Packing (pcs)
			L	H	d		
J80XE	80W	1550	78	67	8	99300278	100
J120XE	120W	1920	78	67	8	99300279	100
J120XE	120W	2250	118	107	9	99300280	100
J230XE	230W	5600	118	107	9	99300290	100
J400XE	400W	9900	118	107	9	99300291	100



MHL



Model	Watt	Lumen (lm)	Colour temp. (K)	Colour	Catalogue number	Packing (pcs)
MHL	70W	5600	4200	transparent	99410126	240
MHL	150W	12000	4200	transparent	99410127	240



MHLGR



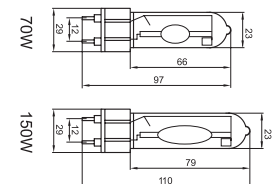
Model	Watt	Colour	Catalogue number	Packing (pcs)
MHLGR	70W	green	99410132	240
MHLGR	150W	green	99410133	240

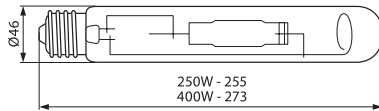


MHL



Model	Watt	Lumen (lm)	Colour temp. (K)	Colour	Catalogue number	Packing (pcs)
MHL	70W	5600	4200	transparent	99410128	240
MHL	150W	12000	4200	transparent	99410129	240

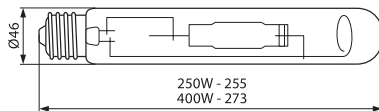




MHL T



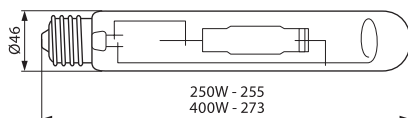
Model	Watt	Lumen (lm)	Colour temp. (K)	Colour	Catalogue number	Packing (pcs)
MHL T	250W	21000	4200	transparent	99410130	45
MHL T	400W	36000	4200	transparent	99410131	35



MHLGR T



Model	Watt	Colour	Catalogue number	Packing (pcs)
MHLGR T	250W	green	99410134	45
MHLGR T	400W	green	99410135	35



MHL



Model	Watt	Lumen (lm)	Colour temp. (K)	Colour	Catalogue number	Packing (pcs)
MHL	250W	7000	5000	transparent	99440193	50
MHL	400W	11200	5000	transparent	99440194	50



BML



Model	Watt	Lumen (lm)	Colour temp. (K)	Lamp holder	Colour	Catalogue number	Packing (pcs)
BML	160W	3000	4200	E27	matt	99420136	25
BML	250W	5800	4200	E27	matt	99420137	20
BML	250W	14000	4200	E40	matt	99420138	20



HPML



Model	Watt	Lumen (lm)	Colour temp. (K)	Lamp holder	Colour	Catalogue number	Packing (pcs)
HPML	125W	6500	4200	E27	matt	99430139	25
HPML	250W	13500	4200	E40	matt	99430140	20
HPML	400W	23000	4200	E40	matt	99430141	10



HPSL



Model	Watt	Lumen (lm)	Colour temp. (K)	Lamp holder	Colour	Current (A)	Catalogue number	Packing (pcs)
HPSL	70W	5500	2000	E27	transparent	0,98	99400075	50
HPSL	100W	8200	2000	E40	transparent	1,2	99400076	50
HPSL	150W	14000	2000	E40	transparent	1,8	99400077	50
HPSL	250W	23000	2000	E40	transparent	3	99400078	50
HPSL	400W	42000	2000	E40	transparent	4,6	99400079	50



SETDC CONSTANT VOLTAGE DRIVER FOR SPOTLIGHT



Model	Watt	Voltage	Catalogue number	Packing (pcs)
SETDC01	1W	230VAC/12VDC	99DRIVERDC01	100
SETDC03	3W	230VAC/12VDC	99DRIVERDC03	100



SETDC CONSTANT VOLTAGE DRIVER FOR DOWNLIGHT



Model	Watt	Voltage	Catalogue number	Packing (pcs)
SETDCDW5	5W	230VAC/12VDC	99DRIVERDC5	50
SETDCDW10	10W	230VAC/12VDC	99DRIVERDC10	50
SETDCDW15	15W	230VAC/12VDC	99DRIVERDC15	50
SETDCDW20	20W	230VAC/12VDC	99DRIVERDC20	50



SETDC CONSTANT VOLTAGE DRIVER FOR VEGA



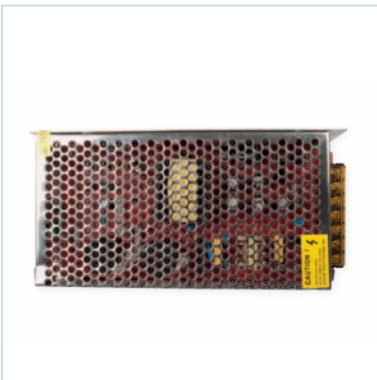
Model	Watt	Voltage	Catalogue number	Packing (pcs)
SETDC10	10W	230VAC/12VDC	99DRIVER10	50
SETDC20	20W	230VAC/12VDC	99DRIVER20	50
SETDC30	30W	230VAC/12VDC	99DRIVER30	50
SETDC50	50W	230VAC/12VDC	99DRIVER50	50



SETDC CONSTANT VOLTAGE DRIVER FOR LED



Model	Watt	Voltage	Size (mm)			Catalogue number	Packing (pcs)
			Lenght	Width	Height		
SETDC12PVC	12W	230V AC / 12V DC	90	48	34	99SETDC12PVC	25
SETDC24PVC	24W	230V AC / 12V DC	115	48	34	99SETDC24PVC	25



SETDC CONSTANT VOLTAGE DRIVER FOR LED



Model	Watt	Voltage	Size (mm)			Catalogue number	Packing (pcs)
			Lenght	Width	Height		
SETDC15	15W	230VAC/12VDC	70	39	31	99SETDC15IP20	100
SETDC30	30W	230VAC/12VDC	85	58	38	99SETDC30IP20	100
SETDC60	60W	230VAC/12VDC	110	78	38	99SETDC60IP20	50
SEDC100	100W	230VAC/12VDC	159	98	38	99SETDC100IP20	20
SETDC150	150W	230VAC/12VDC	199	98	38	99SETDC150IP20	20



SETDC CONSTANT VOLTAGE DRIVER FOR LED



Model	Watt	Voltage	Size (mm)			Catalogue number	Packing (pcs)
			Lenght	Width	Height		
SETDC30I	30W	230VAC/12VDC	200	30	20	99SETDC30IP67	50
SETDC60I	60W	230VAC/12VDC	178	68	34	99SETDC60IP67	20
SETDC100I	100W	230VAC/12VDC	250	72	45	99SETDC100IP67	20
SETDC150I	150W	230VAC/12VDC	250	128	60	99SETDC150IP67	20



4 KEY RF CONTROLLER FOR RGB STRIP



Model	Current (A)	Lenght	Width	Height	Catalogue number	Packing (pcs)
LEDRGB/CONTROLLER	10	128	64	24	99RGBCONTROL	1



24 KEY IR CONTROLLER FOR RGB STRIP



Model	Catalogue number	Packing (pcs)
RGB controler 16 stationar color and 4 dinamic modes with regulation.	99RGBCONTROL1	1



44 KEY IR CONTROLLER FOR RGB STRIP



Model	Catalogue number	Packing (pcs)
RGB controler 20 stationar color and 6 dinamic modes with regulation and RGB mixer mode.	99RGBCONTROL2	1



RGB AMPLIFIER



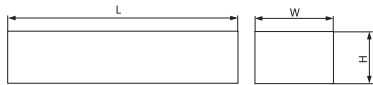
Model	Catalogue number	Packing (pcs)
RGB AMPLIFIER - 12V/12A	99RGBAMPLIFIER	1



LED SINGLE COLOR DIMMER



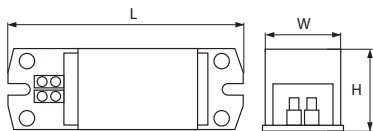
Model	Catalogue number	Packing (pcs)
LED single color dimmer - DC12V/8A	99LEDDIMMER	1



ELECTRONIC TRANSFORMER FOR HALOGEN LAMPS



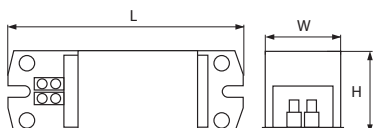
Model	Watt	Voltage	Size (mm)			Catalogue number	Packing (pcs)
			Lenght	Width	Height		
SET60	60W	230V AC / 12V AC	96	42	22	99SET60	100
SET105	105W	230V AC / 12V AC	96	42	22	99SET105	100
SET120	120W	230V AC / 12V AC	96	42	22	99SET120	100
SET160	160W	230V AC / 12V AC	96	42	22	99SET160	100
SET200	200W	230V AC / 12V AC	96	42	22	99SET200	100



ELECTRONIC BALLAST FOR FLUORESCENT LAMPS



Model	Watt	Lamp type	Size (mm)			Catalogue number	Packing (pcs)
			L	W	H		
EB118	1X18	T8	274	27	27	99EB0118	50
EB218	2X18	T8	274	27	27	99EB0218	50
EB136	1X36	T8	274	27	27	99EB0136	50
EB236	2X36	T8	320	32	28	99EB0236	50
EB158	1X58	T8	320	32	28	99EB0158	50
EB258	2X58	T8	320	32	28	99EB0258	50
EB214	2X14	T5	250	25	25	99EB0214	50
EB228	2X28	T5	250	25	25	99EB0228	50
EB414	4X14	T5	250	25	25	99EB0414	50



ELECTRONIC BALLAST FOR COMPACT FLUORESCENT LAMPS



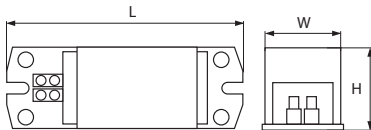
Model	Watt	Lamp type	Size (mm)			Catalogue number	Packing (pcs)
			L	W	H		
EB213PL	2X13W	PLC4P	103	67	30	99EB0213PL	100
EB218PL	2X18W	PLC4P	103	67	30	99EB0218PL	100
EB226PL	2X26W	PLC4P	103	67	30	99EB0226PL	100



MAGNETIC BALLAST FOR FLUORESCENT LAMPS - TYPE T8

~230V **CE**

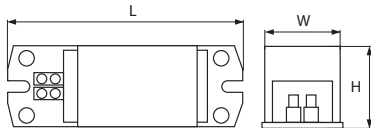
Model	Watt	Size (mm)			Catalogue number	Packing (pcs)
		L	W	H		
BALLAST	1X18W	160	43	30	990118W	1
BALLAST	1X36W	160	43	30	990136W	1



MAGNETIC BALLAST FOR COMPACT FLUORESCENT LAMPS

~230V **CE**

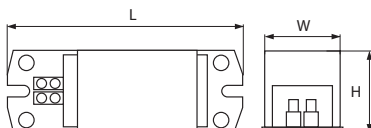
Model	Watt	Size (mm)			Catalogue number	Packing (pcs)
		L	W	H		
BALLAST	18W	155	42	28	9913142	40
BALLAST	26W	155	42	28	9913143	40



MAGNETIC BALLAST FOR HPSL AND MHL LAMPS

~230V **CE**

Model	Watt	Current (A)	Size (mm)			Catalogue number	Packing (pcs)
			L	W	H		
BALLAST	70W	0,95	120	60	50	99110111	8
BALLAST	100W	1,20	120	60	50	99110112	8
BALLAST	150W	1,80	130	75	65	99110113	8
BALLAST	250W	3,00	150	80	65	99110114	6
BALLAST	400W	4,50	185	70	65	99110115	6
BALLAST	1000W	10,30	190	100	100	99110117	2
BALLAST	2000W	16,50A	280	100	85	99110118	1



**STARTER FOR FLUORESCENT LAMPS - TYPE T8**

~230V CE

Model	Watt	Size (mm)		Catalogue number	Packing (pcs)
		L	φ		
STARTER S2	4-22W	35	20	990S2	10
STARTER S10	4-65W	35	20	990S10	10

**LAMP HOLDER**

CE

Model	Lamp	Material	Catalogue number	Packing (pcs)
Lamp holder	GU 10	ceramic	99292	100

**LAMP HOLDER**

CE

Model	Lamp	Material	Catalogue number	Packing (pcs)
Lamp holder	G 4 / G 5.3 / GY 6.35	ceramic	99293	100



LAMP HOLDER



Model	Lamp	Material	Catalogue number	Packing (pcs)
Lamp holder	E 27	ceramic	99294	100



LAMP HOLDER



Model	Lamp	Material	Catalogue number	Packing (pcs)
Lamp holder with support	E 27	ceramic	99295	100



LAMP HOLDER



Model	Lamp	Material	Catalogue number	Packing (pcs)
Lamp holder	E 14	ceramic	99296	100



LAMP HOLDER



Model	Lamp	Material	Catalogue number	Packing (pcs)
Lamp holder with support	E 14	ceramic	99297	100

**LAMP HOLDER**

Model	Lamp	Material	Catalogue number	Packing (pcs)
Lamp holder	E 40	ceramic	99298	100

**LAMP HOLDER**

Model	Lamp	Material	Catalogue number	Packing (pcs)
Lamp holder hanging	E 27	bakelite	19216301	240

**LAMP HOLDER**

Model	Lamp	Material	Catalogue number	Packing (pcs)
Lamp holder curved	E 27	bakelite	192166	240

**LAMP HOLDER**

Model	Lamp	Material	Catalogue number	Packing (pcs)
Lamp holder pendant	E 27	bakelite	192165	240